



Parts Manual

Mfg. No: 076180-00
25,000 Watt LC Standby Generator

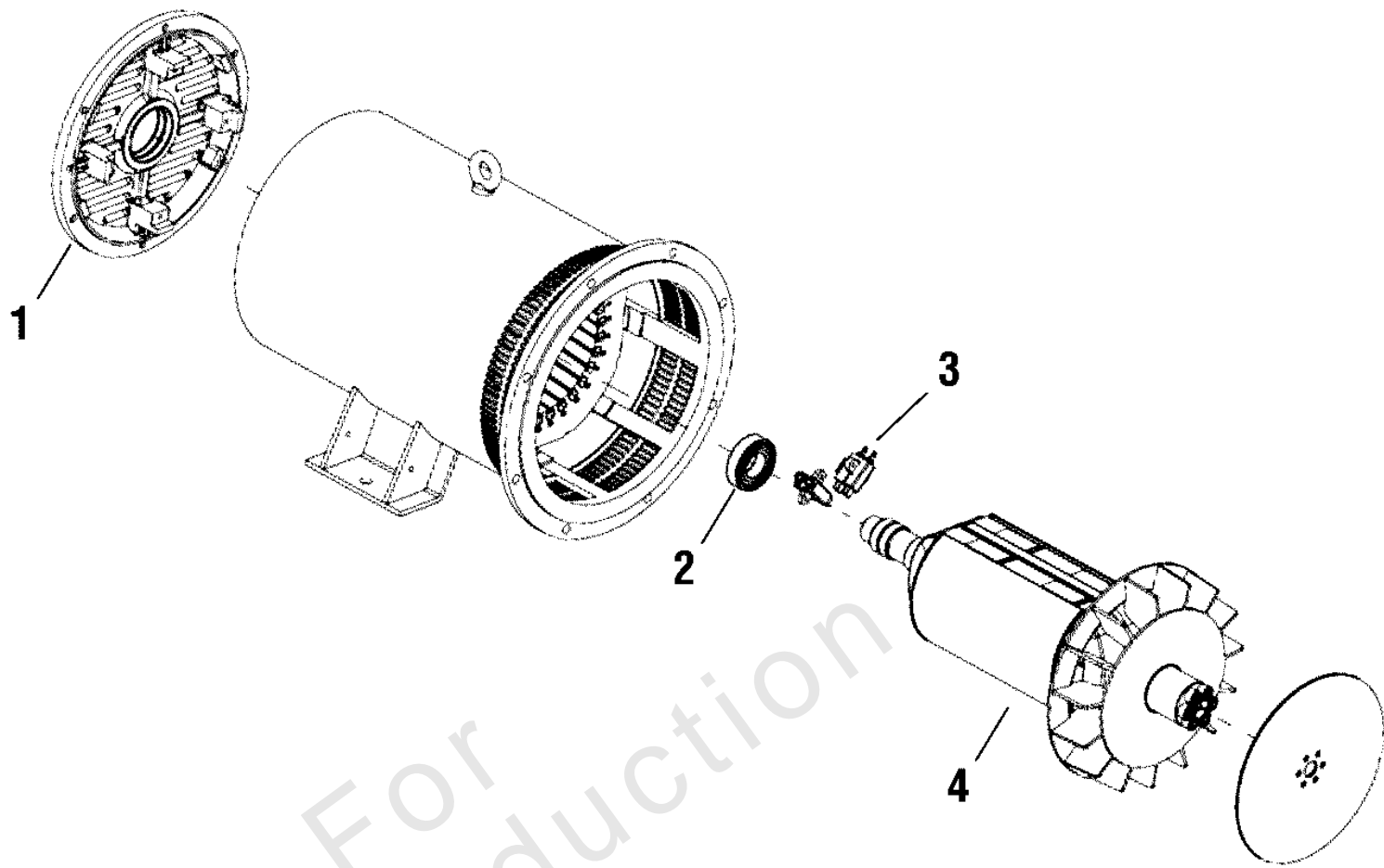
Model Components	Page
Alternator.....	4
Control Panel.....	6
Decals Group.....	8
Enclosure.....	10
Engine Group.....	12
Engine Group - Common Service Parts - 1.6L Engine.....	14
Engine Group - Fuel Components.....	16
Main Unit.....	18
Manuals & Accessories.....	20
Torque Specification Chart.....	22

Not For
Reproduction

Alternator

Note: Unless noted otherwise, use the standard torque specifications

Mfg. No: 076180-00



Alternator

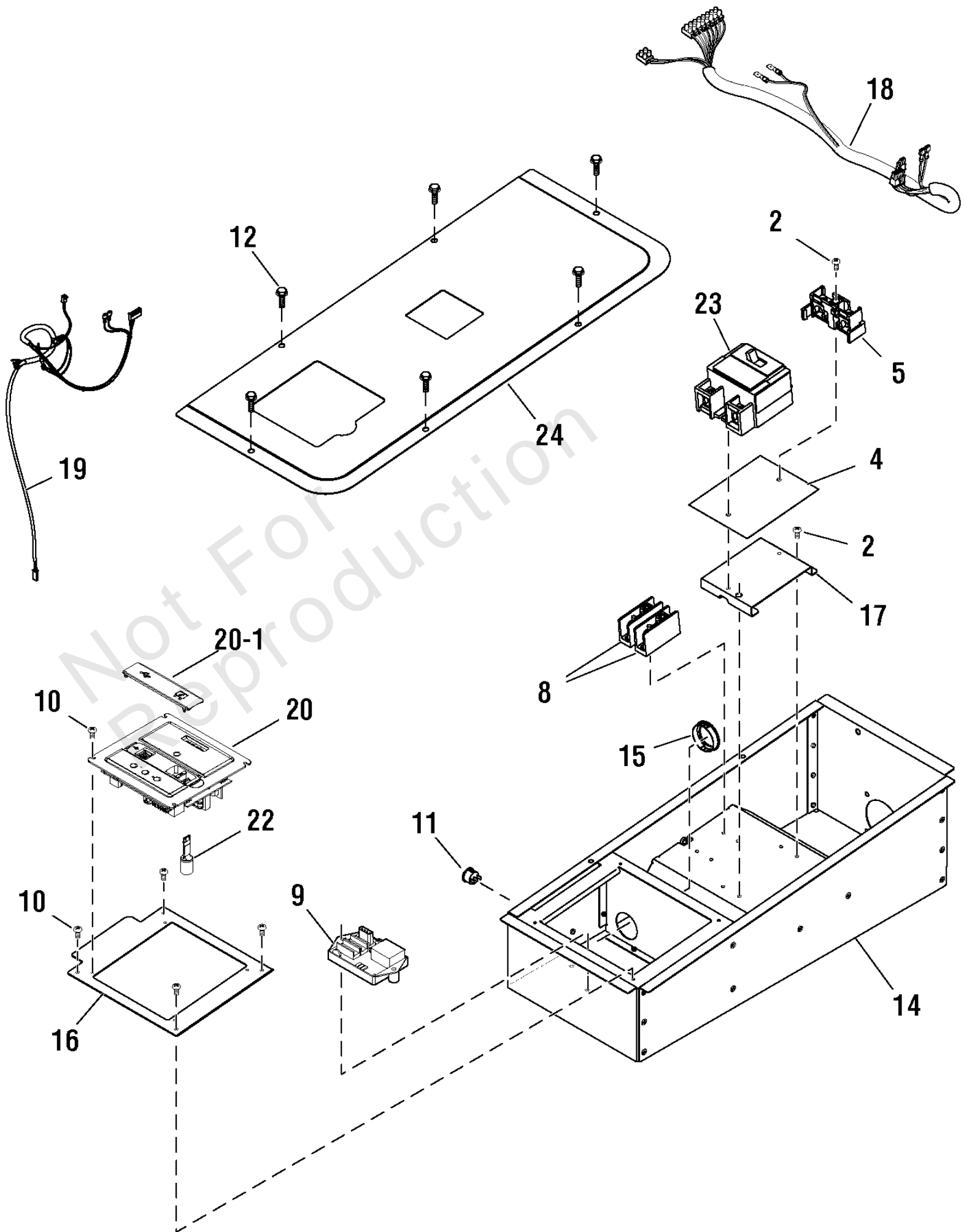
REF NO	PART NO	QTY	DESCRIPTION
1	706009		COVER
2	-----		BEARING
3	66386GS		BRUSH ASSEMBLY
4	706013		ROTOR

Not For
Reproduction

Control Panel

Note: Unless noted otherwise, use the standard torque specifications

Mfg. No: 076180-00



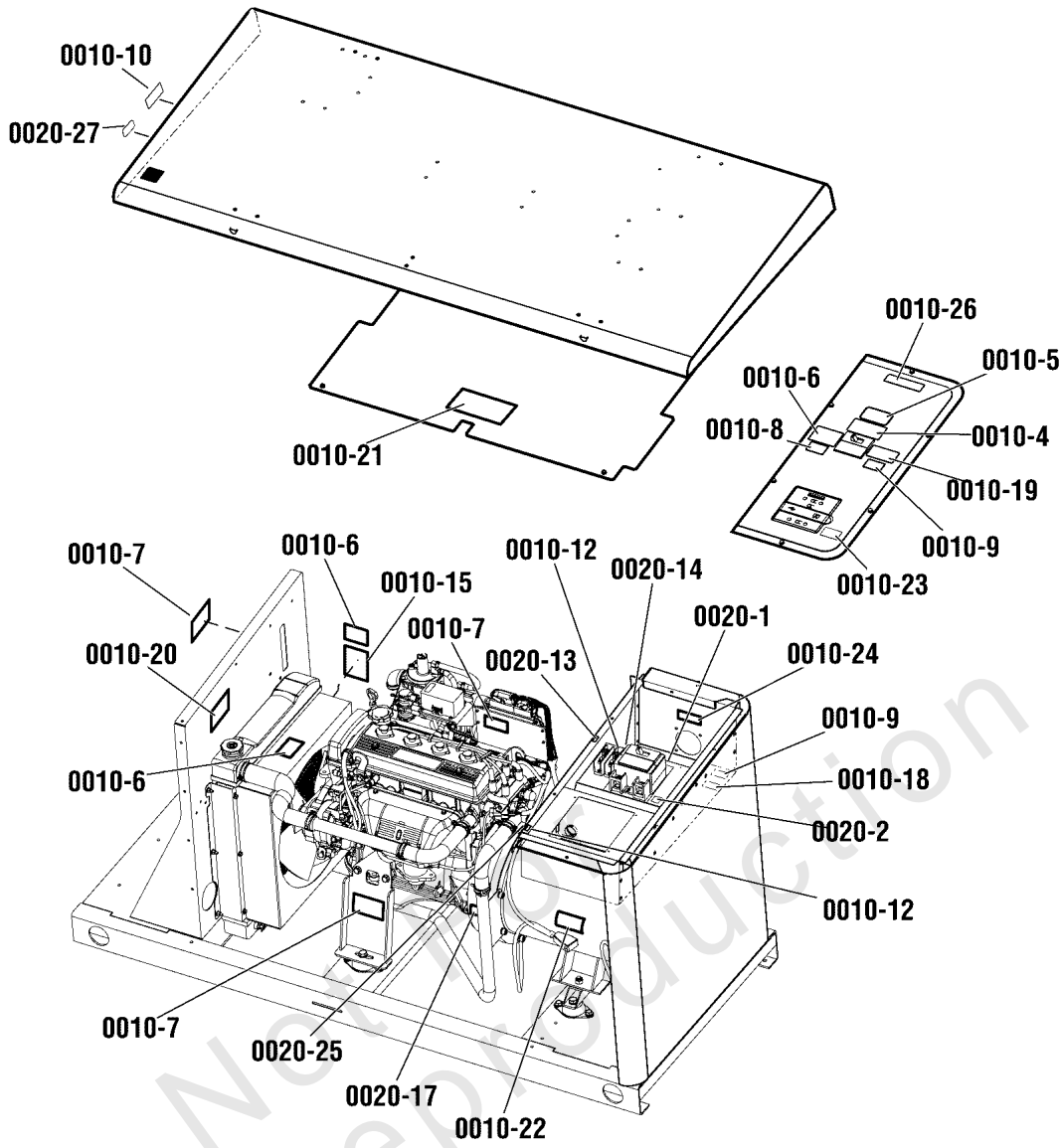
Control Panel

REF NO	PART NO	QTY	DESCRIPTION
2	-----		* SCREW, Phillips Head, M4-0.7 x 20 -(*See footnote)
4	204519GS		INSULATION
5	204530GS		KIT, Load Lug Conversion
8	208365GS		BLOCK, Terminal
9	209856GS		REGULATOR, Voltage
10	-----		* SCREW, Thread Forming, #10-32 x 3/8 -(*See footnote)
11	315551GS		SWITCH, Rocker
12	-----		* BOLT, Flange, M6 x 1 x 20 -(*See footnote)
14	317636GS		BOX-CONTROL PANEL -(Use on Serial No. 1022578709 and before.)
14	707900		BOX-CONTROL PANEL -(Use after Serial No. 1022578709)
15	704265		BUSHING -(Use on Serial No. 1022578709 and before.)
15	707901		BUSHING -(Use after Serial No. 1022578709)
16	707902		BRACKET-CONTROL PANEL -(Use after Serial No. 1022578709)
17	707903		BRACKET -(Use after Serial No. 1022578709)
18	314639GS		HARNESS-WIRE
19	319686GS		HARNESS-WIRE
20	315423GS		CONTROL PANEL -(Includes Ref. No. 20-1)(**See Footnote)
20-1	319009GS		DOOR, Access
22	704281		CAPACITOR
23	319606GS		CIRCUIT BREAKER
24	BA317637GS		COVER, DOOR
--	6479GS		KIT, Off Board Radio -(Not Illustrated)
--	770128		CONNECTOR-AVR -(Not Illustrated)

Footnotes:

** If system has a wireless monitor, 6479GS (Off Board Radio Kit) will be required along with control panel.

* Items without part numbers are common fasteners and are available at your local hardware store.



0020

- N.O.
- COM
- N.C.
- TxRx
- TxRxGND
- +LED
- GND

0020-1

UTILITY A
UTILITY B

0020-2

NEUTRAL

0020-13

L1
L2

0020-14

Fuel Inlet
N.G. / L.P.G.

0020-16

OIL DRAIN

0020-17

NG LP
FUEL SOURCE

0020-25

RAINFOOF ENCLOSURE

0020-27

0010

WARNING

Failure to read and follow Installation and Operator's manuals before installing and operating the generator system could result in death or serious injury.

0010-4

WARNING

BURN HAZARD. Hot surface could cause burns resulting in death or serious injury. Do Not touch hot surfaces.

0010-7

GND

0010-12

WARNING

For outdoor installation ONLY. Running engines gives off carbon monoxide, an odorless, colorless poison gas that can cause dizziness, fainting or death. Keep exhaust gas from entering a confined area through windows, doors, ventilator intakes or other openings.

0010-19

WARNING

Explosion and Chemical Hazard. Hydrogen gas fumes from battery are highly explosive that could result in serious injury. Sulfuric acid can cause blindness or severe burns. Keep flames and sparks away from battery. See owners manual for proper use of auxiliary cables.

0010-22

CAUTION

FOR STANDBY SERVICE ONLY. FOR STANDBY SERVICE CONNECT OUTPUT OF GENERATOR TO SUITABLY RATED TRANSFER SWITCH IN ACCORDANCE WITH CANADIAN ELECTRICAL CODE, PART I.

0010-5

WARNING

Electric Shock Hazard could result in death or serious injury. Do Not remove panel/barrier. No serviceable parts inside. Refer servicing to qualified personnel only. Disconnect all sources of supply voltage before servicing.

0010-8

NOTICE

FUEL REQUIREMENTS

Estimated generator fuel supply requirements for both natural gas and LP vapor.

Model	Natural Gas	LP Vapor
15kW	458,800 BTU/H	465,100 BTU/H
18kW	717,000 BTU/H	725,500 BTU/H
20kW	785,000 BTU/H	892,500 BTU/H

See the product requirements at fuel type 7 in specs WC.

Model

Model	Natural Gas	LP Vapor
25kW	968,100 BTU/H	987,000 BTU/H
30kW	1,414,500 BTU/H	1,430,800 BTU/H

Fuel inlet pressure requirements at fuel type 5-11 inches WC.

0010-15

WARNING

Hot pressurized coolant could result in severe injury. DO NOT open when hot. Allow coolant to cool before servicing.

0010-20

WARNING

Fire Hazard. Using the improper fuse could result in death or serious injury. Replace only with same type and rating of fuse.

0010-23

WARNING

Engine could start anytime without notice which could result in death or serious injury. Remove control panel fuse and negative battery cable prior to servicing.

0010-6

WARNING

Electric shock hazard could result in death or serious injury. Disconnect all sources of supply voltage before servicing.

0010-9

NOTICE

ALL TERMINAL AND BUS LUGS ARE SUITABLE FOR COPPER WIRE 60/75° C RATING

0010-18

WARNING

Moving parts can crush and cut which could result in death or serious injury. DO NOT operate with guard removed. Remove panel fuse and negative battery cable before servicing.

0010-21

NOTICE

CONDUIT ENTRY AREA

0010-24

WARNING

Fire Hazard. Operation of this equipment may create sparks that can start fires around dry vegetation. A spark arrester may be required. The operator should contact local fire agencies for rules or regulations relating to fire prevention requirements.

0010-10

DANGER
HIGH VOLTAGE

0010-26

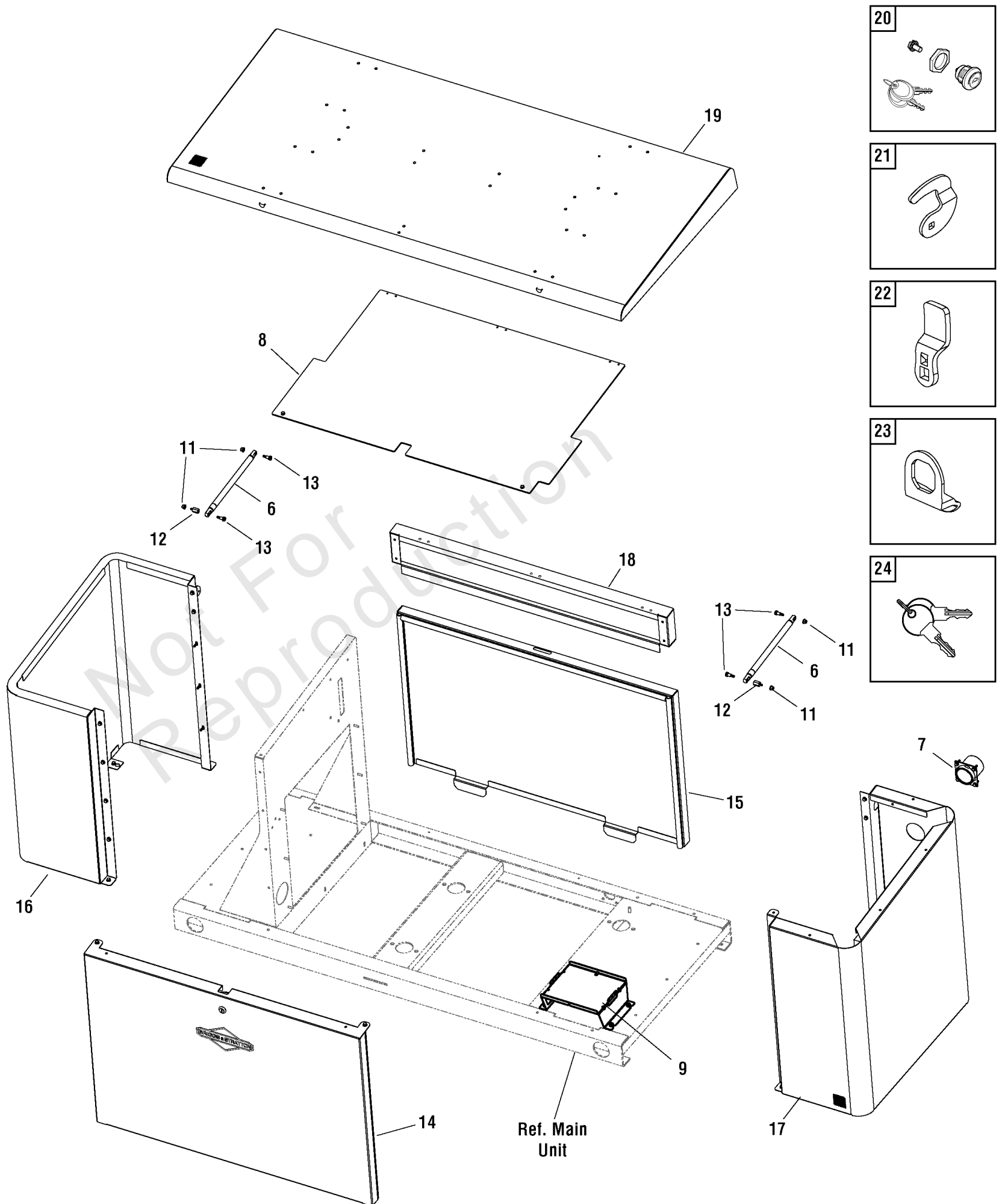
Decals Group

REF NO	PART NO	QTY	DESCRIPTION
0010	705920		DECAL SHEET - WARNINGS -(Includes all decals shown in box.)
0010-4	-----		DECAL, Warning, Read Manual
0010-5	-----		DECAL, Caution, Standby
0010-6	-----		DECAL, Warning, Auto Start
0010-7	-----		DECAL, Warning, Burn Hazard
0010-8	-----		DECAL, Warning, Electric Shock
0010-9	-----		DECAL, Warning, Electric Shock
0010-10	-----		DECAL, Warning, Fire Hazard
0010-12	-----		DECAL, Ground, Green
0010-15	-----		DECAL, Notice, Fuel Requirements
0010-18	-----		DECAL, Wire Size
0010-19	-----		DECAL, Warning, Outdoor Install
0010-20	-----		DECAL, Warning, Hot Coolant
0010-21	-----		DECAL, Warning, Moving Parts
0010-22	-----		DECAL, Warning, Explosion
0010-23	-----		DECAL, Fuse Spec
0010-24	-----		DECAL, Conduit Entry
0010-26	-----		DECAL, Danger, High Voltage
0020	705919		DECAL SHEET - LCG -(Includes all decals shown in box.)
0020-1	-----		DECAL, Terminal Strip
0020-2	-----		DECAL, Terminal Strip
0020-13	-----		DECAL, Neutral
0020-14	-----		DECAL, L1/L2 Icon
0020-16	-----		DECAL, Fuel Inlet
0020-17	-----		DECAL, Oil Drain
0020-25	-----		DECAL, Fuel Source
0020-27	-----		DECAL, Rainproof Enclosure

Enclosure

Note: Unless noted otherwise, use the standard torque specifications

Mfg. No: 076180-00



Enclosure

REF NO	PART NO	QTY	DESCRIPTION
6	314649GS		SPRING
7	BG318007GS		FITTING
8	318597GS		GUARD
9	BA319333GS		TRAY-BATTERY
11	-----		* NUT, Hex Flange, M6
12	704297		ADAPTER
13	-----		* BOLT, Shoulder, M6, 8 x 12
14	704254		DOOR-FRONT -(Includes Ref. Nos. 20 & 21)
15	704255		DOOR-BACK -(Includes Ref. Nos. 20, 22 & 23)
16	704256		BULKHEAD
17	704258		BULKHEAD
18	704260		RAIL-DOOR
19	704262		ROOF
20	314619GS		LATCH
21	315443GS		LATCH-ARM -(Front Door)
22	196001GS		LATCH-ARM -(Back Door)
23	704295		TAB-PULL
24	314290GS		KEY

Not For
Reproduction

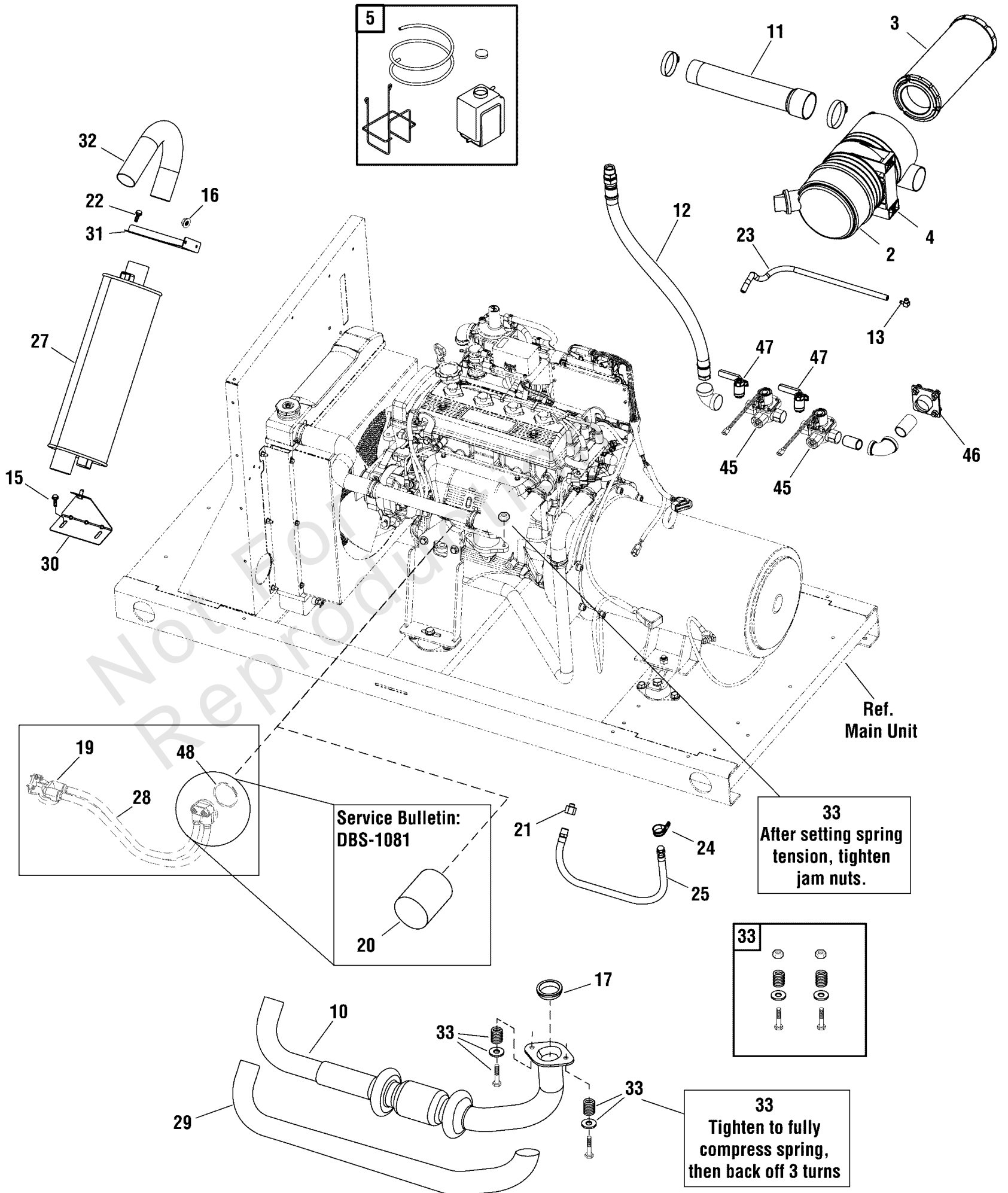
Footnotes:

* Items without part numbers are common fasteners and are available at your local hardware store.

Engine Group

Note: Unless noted otherwise, use the standard torque specifications

Mfg. No: 076180-00



Engine Group

REF NO	PART NO	QTY	DESCRIPTION
2	204274GS		ASSEMBLY, Air Cleaner -(Includes Ref. No. 3)
3	207575GS		FILTER, Cartridge
4	205103GS		CLAMP, Air Cleaner
5	205226GS		KIT, Bottle Overflow
10	317579GS		EXHAUST
11	317755GS		TUBE
12	318595GS		HOSE-FUEL
13	319774GS		FITTING
15	-----		* BOLT, Flange, M6 x 1.0 x 20
16	-----		* NUT, Hex Flange, Nylon Insert, M6
17	704268		GASKET
19	704267		ADAPTER-OIL FILTER -(No longer serviceable: Refer to Service Bulletin DBS-1081.)
20	771863		FILTER, Oil
21	704337		ADAPTER
22	-----		* SCREW, 5/16-18 x 5/8
23	704269		HOSE, FUEL
24	704270		CLAMP
25	704271		HOSE-OIL DRAIN
27	704272		MUFFLER
28	704274		HOSE -(No longer serviceable: Refer to Service Bulletin DBS-1081.)
29	206985GS		SLEEVE, Insulation
30	704275		BRACKET
31	704276		BRACKET
32	704277		DIFFUSER
33	707925		KIT-HARDWARE, EXHAUST -(Includes all items shown in box.)
45	314110GS		VALVE, Fuel -(Use on Serial No. 1022125702 and earlier)
45	706433		SOLENOID-GAS FUEL -(Use after Serial No. 1022125702)
46	BC310518GS		COUPLING
47	312788GS		BALL, Valve, 1/8
48	709901		O-RING -(No longer serviceable: Refer to Service Bulletin DBS-1081.)

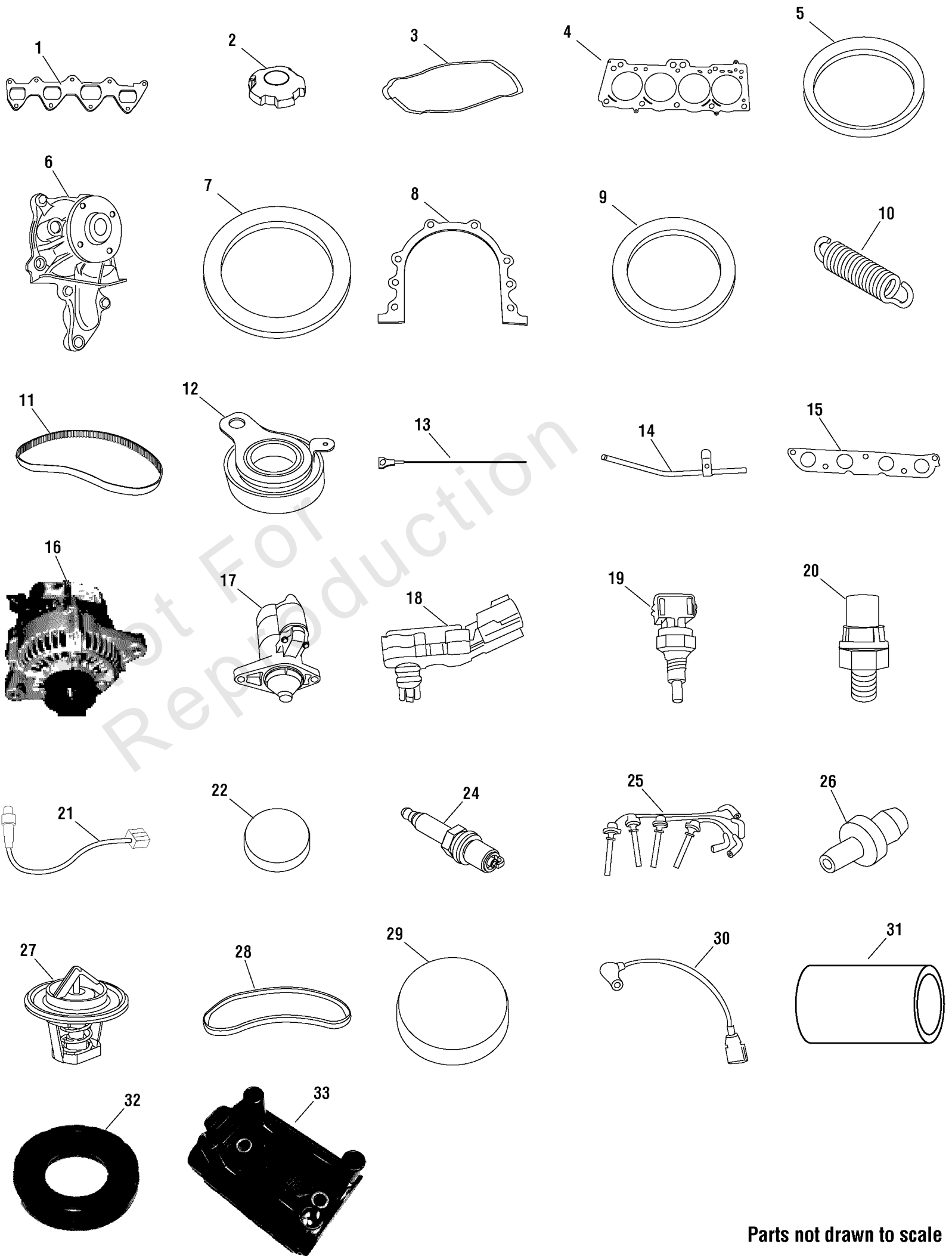
Footnotes:

* Items without part numbers are common fasteners and are available at your local hardware store.

Engine Group - Common Service Parts - 1.6L Engine

Note: Unless noted otherwise, use the standard torque specifications

Mfg. No: 076180-00



Parts not drawn to scale

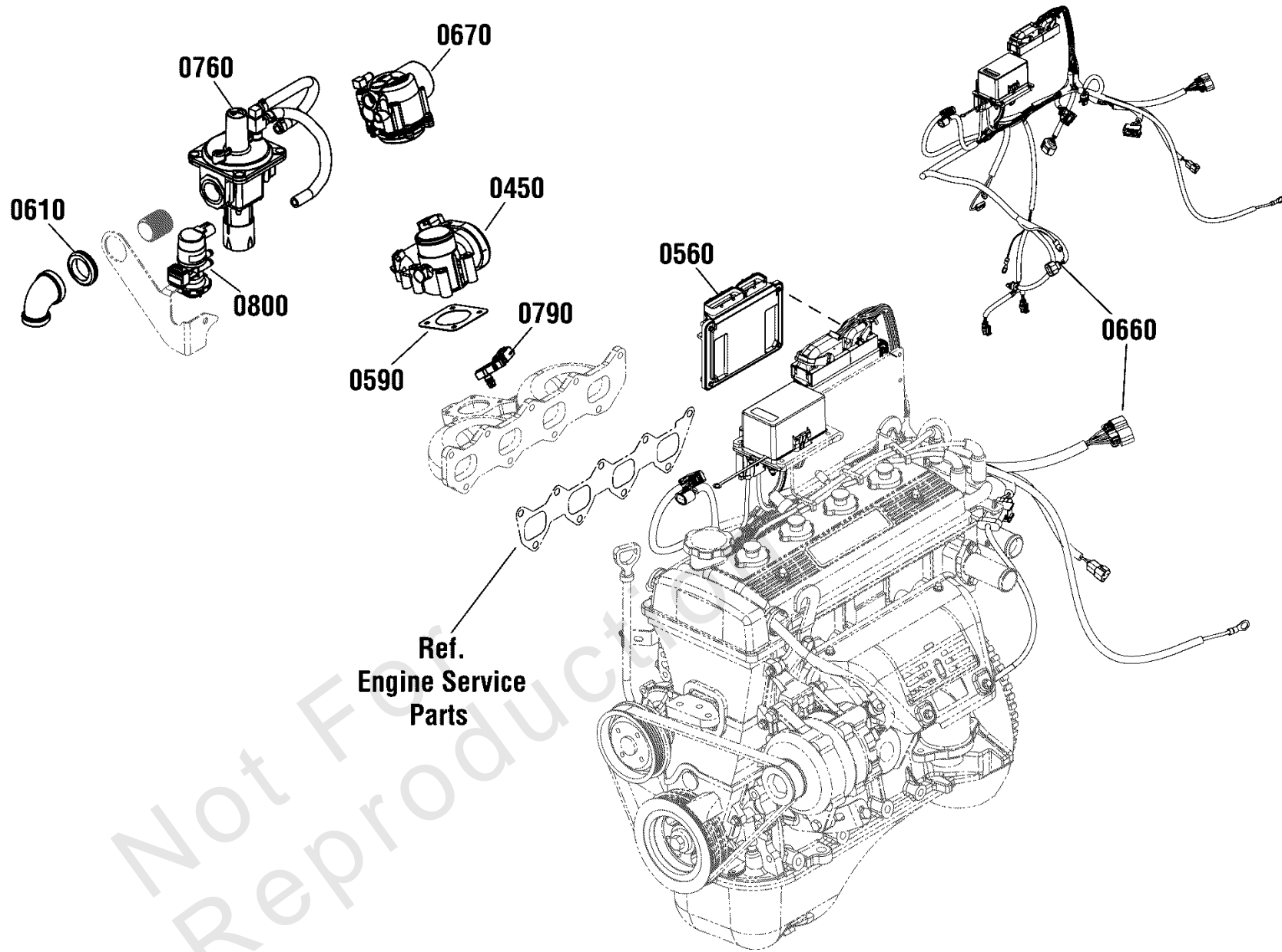
Engine Group - Common Service Parts - 1.6L Engine

REF NO	PART NO	QTY	DESCRIPTION
1	318472GS		GASKET-INTAKE MANIFOLD
2	318702GS		CAP-OIL
3	318703GS		GASKET-VALVE COVER
4	318705GS		GASKET-HEAD
5	318706GS		O-RING-WATER PUMP
6	318708GS		WATER PUMP
7	318709GS		SEAL-FRONT CRANK
8	318710GS		GASKET-REAR MAIN
9	318711GS		SEAL-REAR MAIN
10	318712GS		SPRING-TENSIONER, TIMING BELT
11	318713GS		BELT-TIMING
12	318714GS		TENSIONER-TIMING BELT
13	318717GS		DIPSTICK
14	318718GS		TUBE-DIPSTICK
15	318719GS		GASKET-EXHAUST MANIFOLD
16	318720GS		ALTERNATOR-ENGINE
17	318721GS		STARTER
18	318722GS		SENSOR-MAP
19	318723GS		SENSOR, Temperature
20	318725GS		SENSOR-OIL PRESSURE
21	318726GS		SENSOR-OXYGEN
22	318727GS		PLUG-FREEZE, 35mm
24	318729GS		SPARK PLUG
25	318730GS		WIRE-SPARK PLUG SET
26	318734GS		PCV VALVE
27	318735GS		THERMOSTAT
28	318737GS		BELT
29	319370GS		PLUG-FREEZE, 40mm
30	318724GS		SENSOR-CRANK POSITION
31	709898		HOSE-WATER PUMP
32	709899		SEAL-SPARK PLUG TUBE
33	709900		COILPACK-IGNITION

Engine Group - Fuel Components

Note: Unless noted otherwise, use the standard torque specifications

Mfg. No: 076180-00



Engine Group - Fuel Components

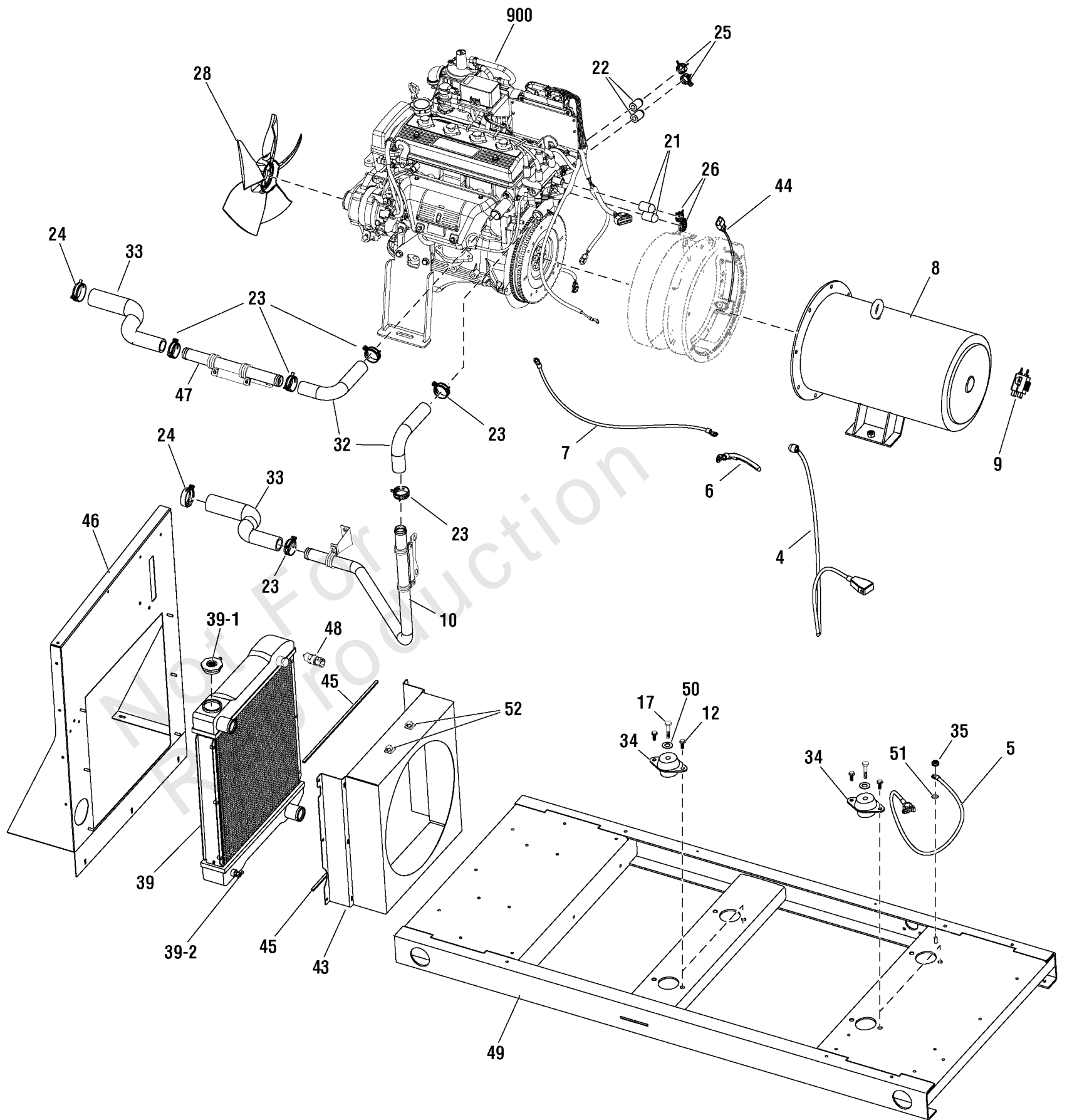
REF NO	PART NO	QTY	DESCRIPTION
0450	318470GS		BODY-THROTTLE
0560	317758GS		ECM
0590	318473GS		GASKET
0610	318876GS		GROMMET
0660	318368GS		HARNESS-WIRE
0670	318474GS		MIXER-FUEL
0760	318478GS		REGULATOR-FUEL
0790	704221		SENSOR
0800	318479GS		VALVE-FUEL

Not For
Reproduction

Main Unit

Note: Unless noted otherwise, use the standard torque specifications

Mfg. No: 076180-00



Main Unit

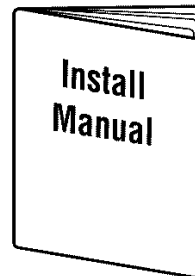
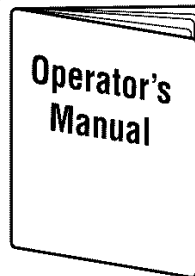
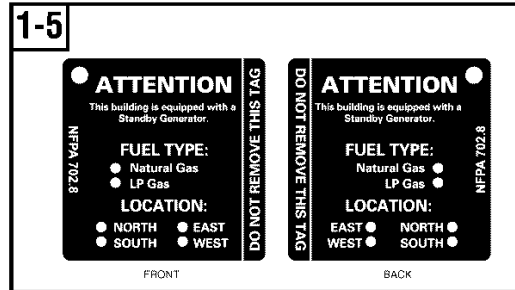
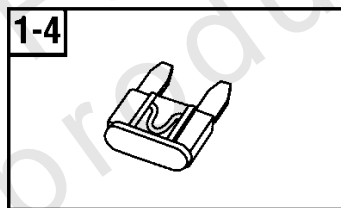
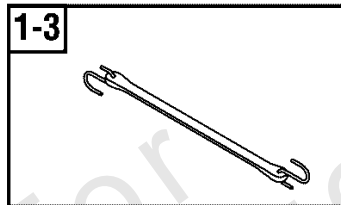
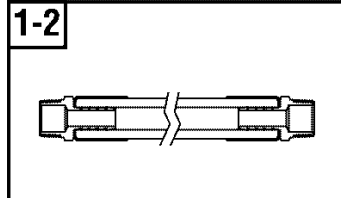
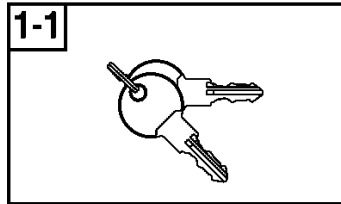
REF NO	PART NO	QTY	DESCRIPTION
4	318369GS		WIRE
5	318370GS		WIRE
6	318371GS		WIRE
7	318372GS		WIRE
8	317592GS		ALTERNATOR
9	66386GS		ASSY-BRUSH
10	318521GS		TUBE
12	-----		* CAPSCREW, Hex Head Flange, M10 x 1.5 x 20
17	-----		* CAPSCREW, Hex Head, M12 x 1.75 x 75
21	319775GS		CAP, Port, Rubber, 11/16"
22	319776GS		CAP, Port, Rubber, 5/16"
23	318541GS		CLAMP
24	318542GS		CLAMP
25	704218		CLAMP
26	704219		CLAMP
28	704220		FAN
32	318520GS		HOSE
33	318519GS		HOSE
34	204653GS		MOUNT-VIBRATION
35	-----		* NUT, Flange, M8
39	318373GS		RADIATOR -(Includes Ref. Nos. 39-1 & 39-2)
39-1	704673		CAP, Radiator
39-2	707487		VALVE-DRAIN
43	319018GS		COVER-FAN
44	318724GS		SENSOR
45	707455		SEAL
46	317569GS		SUPPORT
47	318522GS		TUBE
48	708761		SENSOR-LOW COOLANT -(Use after S/N: 1022908033)
49	-----		BASE
50	-----		* WASHER, Flat, M12
51	-----		* WASHER, Ext Lock, M10
52	197355GS		CLIP
900	317591GS		** ENGINE

Footnotes:

** Contact Briggs & Stratton for parts and service.

* Items without part numbers are common fasteners and are available at your local hardware store.

1



Not For Reproduction

Manuals & Accessories

REF NO	PART NO	QTY	DESCRIPTION
1	704264		KIT-MANUAL ACC -(Includes Ref. Nos. 1-1, 1-2, 1-3, 1-4, 1-5, 1-6 & Manuals)
1-1	314290GS		KEY
1-2	205206GS		HOSE
1-3	316869GS		STRAP-BATTERY TIEDOWN
1-4	198573GS		FUSE
1-5	195200GS		HANG TAG, Attn Standby Equipment
1-6	319693GS		PAINT- TOUCH-UP, CONT CHAR. TEXTURE
--	319677GS		PAINT-SPRAY, CONT CHAR. TEXTURE -(Optional Accessory - Not Included)
--	6268-01		KIT-MAINTENANCE-1000 HR -(Optional Accessory - Not Included)
--	6269		BLOCK HEATER -(Optional Accessory - Not Included)
--	6270		KIT-COLD WEATHER (Includes Battery Warmer & Block Heater) -(Optional Accessory - Not Included)
--	6280		KIT-OIL CHANGE -(Optional Accessory - Not Included)
--	6182		BATTERY WARMER -(Optional Accessory - Not Included)
--	6229		WIRELESS MONITOR -(Use with 076180-00) (Optional Accessory)
--	6276		WIRELESS MONITOR -(Use with 076180-01 & 076780) (Optional Accessory)

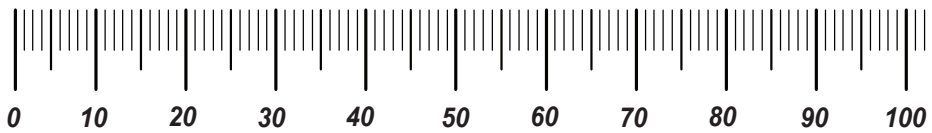
Not For
Reproduction

Hardware Identification & Torque Specifications

Torque Specification Chart								
FOR STANDARD METRIC MACHINE HARDWARE (Tolerance ± 20%)								
Property Class	5.6		8.8		10.9		12.9	
	Class 5.6		Class 8.8		Class 10.9		Class 12.9	
Size Of Hardware	in/lbs	Nm.	in/lbs	Nm.	in/lbs	Nm.	in/lbs	Nm.
	ft/lbs		ft/lbs		ft/lbs		ft/lbs	
M3	5.88	.56	13.44	1.28	19.2	1.80	22.92	2.15
M4	13.44	1.28	30.72	2.90	43.44	4.10	52.56	4.95
M5	26.4	2.50	60.96	5.75	5.97	8.10	7.15	9.7
M6	44.64	4.3	7.3	9.9	10.3	14	12.1	16.5
M7	5.2	7.1	12.1	16.5	16.9	23	19.9	27
M8	7.7	10.5	17.7	24	25	34	29	40
M10	15	21	35	48	50	67	59	81
M12	26	36	61	83	86.2	117	103	140
M14	42	58	101	132	136	185	162	220
M16	64	88	147	200	210	285	250	340
M18	89	121	202	275	287	390	346	470
M20	126	171	290	390	405	550	486	660
M22	169	230	390	530	559	745	656	890
M24	217	295	497	375	708	960	840	1140
M27	320	435	733	995	1032	1400	1239	1680
M30	435	590	995	1350	1401	1900	1681	2280
M33	590	800	1349	1830	1902	2580	2278	3090
M36	759	1030	1740	2360	2441	3310	2935	3980
M39	988	1340	2249	3050	3163	4290	3798	5150

Torque Specification Chart						
FOR STANDARD MACHINE HARDWARE (Tolerance ± 20%)						
Hardware Grade	No Marks		SAE Grade 5		SAE Grade 8	
	SAE Grade 2		SAE Grade 5		SAE Grade 8	
Size Of Hardware	in/lbs	Nm.	in/lbs	Nm.	in/lbs	Nm.
	ft/lbs		ft/lbs		ft/lbs	
8-32	19	2.1	30	3.4	41	4.6
8-36	20	2.3	31	3.5	43	4.9
10-24	27	3.1	43	4.9	60	6.8
10-32	31	3.5	49	5.5	68	7.7
1/4-20	66	7.6	8	10.9	12	16.3
1/4-28	76	8.6	10	13.6	14	19.0
5/16-18	11	15.0	17	23.1	25	34.0
5/16-24	12	16.3	19	25.8	29	34.0
3/8-16	20	27.2	30	40.8	45	61.2
3/8-24	23	31.3	35	47.6	50	68.0
7/16-14	30	40.8	50	68.0	70	95.2
7/16-20	35	47.6	55	74.8	80	108.8
1/2-13	50	68.0	75	102.0	110	149.6
1/2-20	55	74.8	90	122.4	120	163.2
9/16-12	65	88.4	110	149.6	150	204.0
9/16-18	75	102.0	120	163.2	170	231.2
5/8-11	90	122.4	150	204.0	220	299.2
5/8-18	100	136	180	244.8	240	326.4
3/4-10	160	217.6	260	353.6	386	525.0
3/4-16	180	244.8	300	408.0	420	571.2
7/8-9	140	190.4	400	544.0	600	816.0
7/8-14	155	210.8	440	598.4	660	897.6
1-8	220	299.2	580	788.8	900	1,244.0
1-12	240	326.4	640	870.4	1,000	1,360.0

The guides and ruler furnished below are designed to help you select the appropriate hardware.



Nut, M8

Thread Diameter (mm)

Inside Diameter (in) Threads per inch

Nut, 1/2-16



Screw, M8- 1.25 x 25

Thread Diameter (mm) Distance between threads (mm) Body Length (mm)

Body Diameter Threads per inch Body Length (in)

Screw, 1/2- 16 x 2



Standard Hardware Sizing

When a washer or nut is identified as 1/2" (M8), this is the *Nominal size*, meaning the *inside diameter* is 1/2 inch (8mm metric thread diameter); if a second number is present it represents the *threads per inch* (distance between threads).

When bolt or capscrew is identified as 1/2 - 16 x 2" (M8 - 1.25 x 50), this means the *Nominal size*, or body diameter is 1/2 inch (8mm metric thread diameter), the second number, 16, represents the *threads per inch*, (*distance between threads*). The final number is the body length of the bolt or screw, 2 inches (50mm).

NOTES

- These torque values are to be used for all hardware excluding: locknuts, self-tapping screws, thread forming screws, sheet metal screws and socket head setscrews.
- Recommended seating torque values for locknuts:
 - for prevailing torque locknuts - use 65% of grade 5 torques.
 - for flange whizlock nuts and screws - use 135% of grade 5 torques.
- Unless otherwise noted on assembly drawings, all torque values must meet this specification.

Common Hardware Types

Hex Head Capscrew



Washer



Carriage Bolt



Hex Nut

Wrench & Fastener Size Guide

1/4" Bolt or Nut Wrench—7/16"	5/16" Bolt or Nut Wrench—1/2"	3/8" Bolt or Nut Wrench—9/16"	7/16" Bolt or Nut Wrench (Bolt)—5/8" Wrench (Nut)—11/16"	1/2" Bolt or Nut Wrench—3/4"
M6 Bolt or Nut Wrench—10mm	M8 Bolt or Nut Wrench—13mm	M10 Bolt or Nut Wrench—17mm	M12 Bolt or Nut Wrench—19mm	M14 Bolt or Nut Wrench—22mm

